

CABLE ACCESSORIES

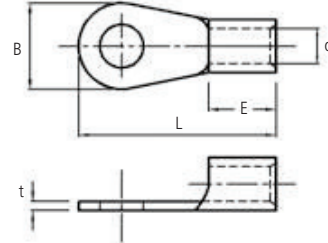
F

CABLE ACCESSORIES

NON-INSULATED TERMINALS TYPE-JOR(R)	114
NON-INSULATED TERMINALS TYPE-JOR(R)	115
NON-INSULATED TERMINALS TYPE-JOR(R)	116
NON-INSULATED TERMINALS TYPE-RD / NON-INSULATED TERMINALS TYPE-CB (FOR LOW-VOLTAGE SWITCHING DEVICES)	117
INSULATED TERMINALS TYPE-RBV(R)	118
PIN TERMINALS TYPE-BLADE / PIN TERMINALS TYPE-PIN	119
NON-INSULATED TERMINALS TYPE-JOR(R) / INSULATED TERMINALS TYPE-RBV(F) / INSULATED TERMINALS-FUNNEL ENTRY TYPE-RBP(F)	120
INSULATED TERMINALS TYPE-RBV(F)	121
TUBULAR BUTT-CONNECTOR TYPE-SP, SB, S-L / NON-INSULATED BUTT SPLICE-FUNNEL ENTRY TYPE-JSFE	122
TUBULAR BUTT-CONNECTORS, SHORT BARREL TYPE-S / TUBULAR BUTT-CONNECTORS, STANDARD BARREL TYPE-SS	123
TUBULAR CABLE LUGS, ONE-HOLE, ROUND COMPRESSED TYPE-CP	124
TUBULAR CABLE LUGS, ONE-HOLE, ROUND COMPRESSED TYPE-CP	125
TUBULAR CABLE LUGS, TWO-HOLE, ROUND COMPRESSED	126
THERMO COMPRESSION TERMINAL LUG (온도변화용 동관단자)	127
CABLE TIES-NYLON 6,6 TYPE-JJV	128
STAINLESS STEEL CABLE TIES-SELF-LOCKING	129
STAINLESS STEEL CABLE TIES-FULLY COATED	130
STAINLESS STEEL CABLE TIES-SEMI-COATED	131
PUSH-IN WIRE CONNECTORS FOR USE WITH SOLID CONDUCTORS	132
TERMINAL CAPS / THERMO TERMINAL CAPS	133
PVC SCREW-ON WIRE CONNECTORS / WIRE JOINT-NYLON 6,6 INSULATED	134
CABLE TAGS / MARKER PLATES-PVC / STAINLESS STEEL MARKER PLATE / COVER BUSHING	135
ELECTRONIC TUBE NUMBERING MAVHIBE (튜브넘버링기)	136
HEAT SHRINKABLE TUBING	137
HEAT SHRINKABLE TUBE - MWTM TYPE (수축관) / HEAT SHRINKABLE TUBE - CRSM TYPE(자켓 보수용 튜브).....	138

■ NON-INSULATED TERMINALS TYPE-JOR(R)

- Material: Oxygen Free Copper
- Surface : Tin plated
- Brazed Seam

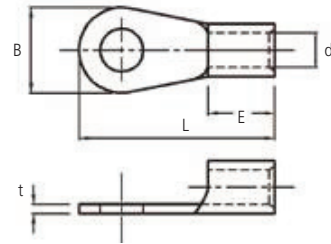


Part Number	K	Wire Range		Stud size (mm)	Dimension (mm)					Q' ty/ bag		
		AWG	Stranded(mm ²)		B	L	E	d	t			
KJOR 1.5-3	○	22~16	1.5	3	5.5	12.5	5.0	1.7	0.7	1,000		
KJOR 1.5-S3.5				3.5							6.6	15.5
KJOR 1.5-3.5	○			3.5								
KJOR 1.5-K4	○			4	5.8	20.8						
KJOR 1.5-4	○			4							21.2	
KJOR 1.5-M4	○			4	11.4	22.5						
KJOR 1.5-5	○			5							17	26
KJOR 1.5-6				6	14	16						
KJOR 1.5-8				8							17.4	17.4
KJOR 1.5-10				10	17.2	17.3						
KJOR 1.5-12				12							12	21.5
KJOR 2.5-M3				3	8	21.5						
KJOR 2.5-3.5	○	3.5	9.5	17.2								
KJOR 2.5-K3.5	○	3.5			17	26						
KJOR 2.5-4	○	4	11.4	22.5								
KJOR 2.5-M4	○	4			17	26						
KJOR 2.5-K4		4	17.2	17.3								
KJOR 2.5-S5	○	5			12	21.5						
KJOR 2.5-5	○	5	8	28								
KJOR 2.5-M6		6			10	25.5						
KJOR 2.5-6	○	6	12	16								
KJOR 2.5-8	○	8			15	28						
KJOR 2.5-10		10	16	25.5								
KJOR 2.5-12		12			5	9						
KJOR 4-M4		4	12	29.5								
KJOR 4-4		4			13.5	29.5						
KJOR 4-5		5	16	32.5								
KJOR 4-6		6			22	38						
KJOR 4-8		8	30	50								
KJOR 4-10		10			5	10						
KJOR 4-12		12	12	29.5								
KJOR 6-S3.5		3.5			13.5	29.5						
KJOR 6-3.5		3.5	16	32.5								
KJOR 6-M4		4			22	38						
KJOR 6-4	○	4	30	50								
KJOR 6-5	○	5			5	10						
KJOR 6-6	○	6	12	29.5								
KJOR 6-K6		6			13.5	29.5						
KJOR 6-S8		8	16	32.5								
KJOR 6-8	○	8			22	38						
KJOR 6-10	○	10	30	50								
KJOR 6-12		12			5	10						
KJOR 10-M5		5	12	29.5								
KJOR 10-S5		5			13.5	29.5						
KJOR 10-5	○	5	16	32.5								
KJOR 10-6	○	6			22	38						
KJOR 10-8	○	8	30	50								
KJOR 10-8	○	8			5	10						
KJOR 10-10	○	10	12	29.5								
KJOR 10-12		12			13.5	29.5						
KJOR 16-S5		5	16	32.5								
KJOR 16-5	○	5			22	38						
KJOR 16-6	○	6	30	50								
KJOR 16-S8		8			5	10						
KJOR 16-8	○	8	12	29.5								
KJOR 16-10	○	10			13.5	29.5						
KJOR 16-12	○	12	16	32.5								
KJOR 16-14	○	14			22	38						
KJOR 16-16		16	30	50								

※ Crimping Tool : See Chart Page C2~C12

■ NON-INSULATED TERMINALS TYPE-JOR(R)

- Material: Oxygen Free Copper
- Surface : Tin plated
- Brazed Seam



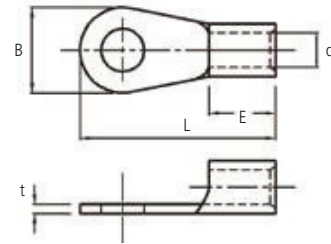
Part Number	KG	Wire Range		Stud size (mm)	Dimension (mm)					Q' ty/ bag					
		AWG	Stranded(mm ²)		B	L	E	d	t						
KJOR 25-S6	○	3~4	25	6	12	33	11.5	7.7	1.7	300					
KJOR 25-6	○			6	16.5	34									
KJOR 25-S8	○			8	12	33.3									
KJOR 25-8	○			8	16.5	34									
KJOR 25-S10	○			10	17.5	39									
KJOR 25-10	○			10	22	43									
KJOR 25-12	○			12	22	43									
KJOR 25-14	○			14	30	52									
KJOR 25-16	○			16	30	52									
KJOR 25-20	○			20	30	52									
KJOR 35-S6	○	2	35	6	16	37	14	9.4	1.8	200					
KJOR 35-S8	○			8	22	42.5									
KJOR 35-6	○			6	16	37									
KJOR 35-8	○			8	22	42.5									
KJOR 35-S10	○			10	30	52.5									
KJOR 35-10	○			10	22	42.5									
KJOR 35-12	○			12	22	42.5									
KJOR 35-14	○			14	30	52.5									
KJOR 35-16	○			16	30	52.5									
KJOR 35-20	○			20	30	52.5									
KJOR 50-6	○	1~1/0	50	6	22	49.5	18	11.4	1.8	100					
KJOR 50-8	○			8											
KJOR 50-10	○			10											
KJOR 50-12	○			12											
KJOR 50-14	○			14											
KJOR 50-16	○			16											
KJOR 50-20	○	20													
KJOR 70-8	○	2/0	70	8.4	24	50.5	18.5	13.3	2.0	100					
KJOR 70-10	○			10.5											
KJOR 70-12	○			12											
KJOR 70-14	○			14											
KJOR 70-16	○			16											
KJOR 70-20	○			20											
KJOR 95-8	○	3/0	95	8.4	27	54	19	14.5	2.3	100					
KJOR 95-10	○			10.5											
KJOR 95-12	○			13											
KJOR 95-14	○			15						32	68	19	14.5	2.3	50
KJOR 95-16	○			17											
KJOR 95-20	○			20											
KJOR 100-8	○	4/0	100	8.4	28.5	54.5	19	16.4	2.6	50					
KJOR 100-10	○			10.5											
KJOR 100-12	○			13											
KJOR 100-14	○			15											
KJOR 100-16	○			17											
KJOR 100-18	○			19											
KJOR 100-20	○	21													
KJOR 120-8	○	250 Kcmil	120	8.4	32.5	61.5	22	18	3.2	50					
KJOR 120-10	○			10.5											
KJOR 120-12	○			13											
KJOR 120-14	○			15											
KJOR 120-16	○			17											
KJOR 120-20	○			21											

※ Crimping Tool : See Chart Page C2~C12



■ NON-INSULATED TERMINALS TYPE-JOR(R)

- Material: Oxygen Free Copper
- Surface : Tin plated
- Brazed Seam

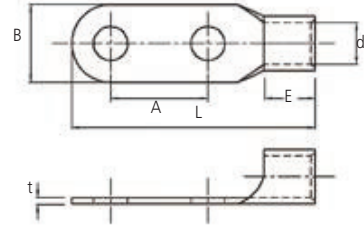


Part Number	K	Wire Range		Stud size (mm)	Dimension (mm)					Q' ty/ bag
		AWG	Stranded(mm ²)		B	L	E	d	t	
KJOR 150-8		300 Kcmil	150	8	36	67	27	19.5	3.2	30
KJOR 150-10	○			10						
KJOR 150-12	○			12						
KJOR 150-14	○			14						
KJOR 150-16	○			16						
KJOR 150-18	○			18						
KJOR 150-20	○			20						
KJOR 150-24	○			24						
KJOR 185-10	○	350 Kcmil	185	10.5	38.5	68.5	28.5	21	3.5	30
KJOR 185-12	○			12						
KJOR 185-14	○			14						
KJOR 185-16	○			16						
KJOR 185-18	○			18						
KJOR 185-20	○			20						
KJOR 185-22	○			22						
KJOR 185-24	○			24						
KJOR 240-S10		400 ~ 500 Kcmil	240	10	44	77.5	31.5	24	4.0	30
KJOR 240-S12				12						
KJOR 240-10	○			10						
KJOR 240-12	○			12						
KJOR 240-14	○			14						
KJOR 240-16	○			16						
KJOR 240-18	○			18						
KJOR 240-20	○			20						
KJOR 240-22	○			22						
KJOR 240-24	○			24						
KJOR 240-27	○	27								
KJOR 250-S10		500 Kcmil	250	10	44	77.5	31.5	26	4.0	25
KJOR 250-S12				12						
KJOR 250-10				10						
KJOR 250-12				12						
KJOR 250-14				14						
KJOR 250-16				16						
KJOR 250-18				18						
KJOR 250-20				20						
KJOR 250-22				22						
KJOR 250-24				24						
KJOR 250-27		27								
KJOR 300-10	○	600 Kcmil	300	10	50.5	88	35.5	28	4.2	16
KJOR 300-12	○			12						
KJOR 300-14	○			14						
KJOR 300-16	○			16						
KJOR 300-18	○			18						
KJOR 300-20	○			20						
KJOR 300-22	○			22						
KJOR 300-24	○			24						
KJOR 300-27	○			27						

※ Crimping Tool : See Chart Page C2~C12

■ NON-INSULATED TERMINALS TYPE-RD

- Material: Oxygen Free Copper
- Surface : Tin plated
- Brazed Seam



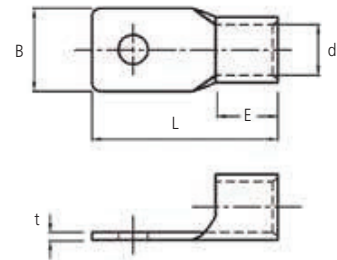
Part Number	Wire Range (mm ²)	Stud size (mm)	Dimension (mm)					Q' ty/ bag	
			B	L	E	d	t		A
KJORD 50-10	50	10	22	82	17.5	11.4	1.8	32	50
KJORD 50-12		12		90				40	
KJORD 50-14		14	32	98				40	
KJORD 95-10	95	10	27	86	18.5	14.5	2.3	32	40
KJORD 95-12		12		95.5				40	
KJORD 95-14		14	32	100				40	
KJORD 100-10	100	10	28.5	88	18.5	16.4	2.6	32	30
KJORD 100-12		12		96				40	
KJORD 100-14		14	32	100				40	
KJORD 120-10	120	10	32.5	88	18.5	18.0	3.2	32	30
KJORD 120-12		12		96				40	
KJORD 120-14		14	100	40					
KJORD 150-12	150	12	36	106	26	19.5	3.2	40	25
KJORD 150-14		14							20
KJORD 240-12	240	12	44	117	30.5	24.0	3.9	40	10
KJORD 240-14		14							30
KJORD 300-12	300	12	50.5	124	34.5	28.0	4.2	40	10
KJORD 300-14		14							30

※ Crimping Tool : See Chart Page C2~C12



■ NON-INSULATED TERMINALS TYPE-CB (FOR LOW-VOLTAGE SWITCHING DEVICES)

- Material: Oxygen Free Copper
- Surface : Tin plated
- Brazed Seam

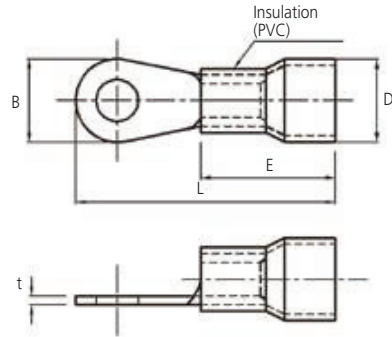


Part Number	Wire Range (mm ²)	Stud size (mm)	Dimension (mm)					Q' ty/ bag
			B	L	E	d	t	
KJOCB 50-8	50	8	16	48.5	18.5	11.4	1.8	100
KJOCB 95-8	95	8	22	54.5	19.0	16.4	2.6	50
KJOCB 95-10		10	22	54.5	19.0	16.4	2.6	50
KJOCB 150-8	150	8	22	63.5	26.5	19.5	3.2	30
KJOCB 150-10		10	25	64.5	27.0	19.5	3.2	30

※ Crimping Tool : See Chart Page C2~C12

INSULATED TERMINALS TYPE-RBV(R)

- Material: Oxygen Free Copper
- Surface : Tin plated
- Insulation : PVC
- Insulation Temperature Rated 105°C



Part Number		Wire Range		Stud size (mm)	Dimension (mm)					Color	Q' ty/ bag										
Without Brazed Seam	Brazed Seam	AWG	Stranded (mm ²)		B	L	E	d	t												
KJOPR 1.5-3	KJOPR 1.5-3W	22~16	1.25 1.5	3	5.5	17.5	10	6.1	0.7	RED BLUE YELLOW WHITE BLACK	1,000										
KJOPR 1.5-S3.5	KJOPR 1.5-S3.5W			3.5	5.5																
KJOPR 1.5-3.5	KJOPR 1.5-3.5W			3.5	6.6																
KJOPR 1.5-K4	KJOPR 1.5-K4W			4	5.8	21															
KJOPR 1.5-M4	KJOPR 1.5-M4W			4	8.0																
KJOPR 1.5-4	KJOPR 1.5-4W			5	11.4																
KJOPR 1.5-5	KJOPR 1.5-5W			6	25.8	10						6.1	0.8								
KJOPR 1.5-6	KJOPR 1.5-6W			8	26.2																
KJOPR 1.5-8	KJOPR 1.5-8W			10	27.5																
KJOPR 1.5-10	KJOPR 1.5-10W			12	31																
KJOPR 2.5-M3	KJOPR 2.5-M3W			16~14	2.0 2.5									3	6	21	10	6.1	0.8	BLUE RED YELLOW WHITE BLACK	1,000
KJOPR 2.5-3.5	KJOPR 2.5-3.5W													3.5	6.6	22					
KJOPR 2.5-K3.5	KJOPR 2.5-K3.5W	3.5	7.9			22.7															
KJOPR 2.5-M4	KJOPR 2.5-M4W	4	6.6			22															
KJOPR 2.5-4	KJOPR 2.5-4W	4	8.5			22															
KJOPR 2.5-K4	KJOPR 2.5-K4W	4	7.9			23.9															
KJOPR 2.5-S5	KJOPR 2.5-S5W	5	9.5			23.5															
KJOPR 2.5-5	KJOPR 2.5-5W	5	12			26.5															
KJOPR 2.5-M6	KJOPR 2.5-M6W	6	12			26.5															
KJOPR 2.5-6	KJOPR 2.5-6W	6	12			26.5															
KJOPR 2.5-8	KJOPR 2.5-8W	8	14			29.5															
KJOPR 2.5-10	KJOPR 2.5-10W	10	14			29.5															
KJOPR 2.5-12	KJOPR 2.5-12W	12	17	30.8																	
KJOPR 4-M4	KJOPR 4-4W	14~12	3.5 4	4	6.7	25	14	8.1	0.9	YELLOW RED BLUE WHITE BLACK	1,000										
KJOPR 4-4	KJOPR 4-4W			4	8.3																
KJOPR 4-5	KJOPR 4-5W			5	8.3																
KJOPR 4-6	KJOPR 4-6W			6	11.4	30															
KJOPR 4-8	KJOPR 4-8W			8	14							31.5									
KJOPR 4-10	KJOPR 4-10W			10	14							31.5									
KJOPR 4-12	KJOPR 4-12W			12	16	32.5															
KJOPR 6-S3.5	KJOPR 6-S3.5W			12~10	5.5 6	3.5						7.9	26	14	8.1	0.9	YELLOW RED BLUE WHITE BLACK GREEN	1,000			
KJOPR 6-3.5	KJOPR 6-3.5W	3.5	9.5			26.5															
KJOPR 6-M4	KJOPR 6-M4W	4	7			25															
KJOPR 6-4	KJOPR 6-4W	4	9.5			26.5															
KJOPR 6-5	KJOPR 6-5W	5	9.5			34.7															
KJOPR 6-6	KJOPR 6-6W	6	12			34.7															
KJOPR 6-K6	KJOPR 6-K6W	6	13.5			26.5															
KJOPR 6-S8	KJOPR 6-S8W	8	13.5			34															
KJOPR 6-8	KJOPR 6-8W	8	15			37															
KJOPR 6-10	KJOPR 6-10W	10	16			37															
KJOPR 6-12	KJOPR 6-12W	12	16			32.5															

*when ordering products and postfx "collor & Insulation type" to the partnumber (ex.JOPR 1.5-3 Black Straight)

■ INSULATED TERMINALS TYPE-RBV(R) (Continued)

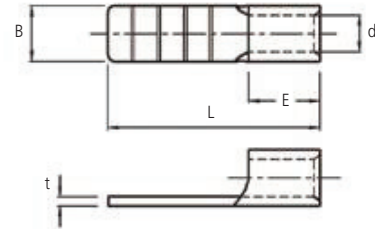
Part Number (Braze Seam)	Wire Range		1Stud size (mm)	Dimension (mm)					Color	Q' ty/ bag
	AWG	Stranded (mm ²)		B	L	E	d	t		
KJOPR 10-M5W	8	10	5	10.9	32.5	11.0	1.15	16	RED	500
KJOPR 10-S5W			5	9.0						
KJOPR 10-5W			5	12	32					
KJOPR 10-6W			6	15	38.5					
KJOPR 10-8W			8							
KJOPR 10-10W			10	20	44					
KJOPR 10-12W			12							
KJOPR 16-S5W			6	16	5					
KJOPR 16-5W	5	12								
KJOPR 16-6W	6	13.5			44.5					
KJOPR 16-S8W	8									
KJOPR 16-8W	8	16			50.5					
KJOPR 16-10W	10									
KJOPR 16-12W	12	22			50.5					
KJOPR 25-S6W	4	25			6	12	46	16.2	1.7	25
KJOPR 25-6W			6	16.5	46.2					
KJOPR 25-S8W			8	12	46					
KJOPR 25-8W			8	16.5	46.2					
KJOPR 25-S10W			10							
KJOPR 25-10W			10	17.5	51.5					
KJOPR 25-12W			12	22	55.5					
KJOPR 35-S6W			2	35	6	16	48			
KJOPR 35-6W	6	22			54.3					
KJOPR 35-S8W	8	16			48					
KJOPR 35-8W	8	22			54.3					
KJOPR 35-S10W	10									
KJOPR 35-10W	10	16			48					
KJOPR 35-12W	12									

※when ordering products and postfx "collor & Insulation type" to the partnumber (ex JOPR 1.5-3 Black Straight)

F

■ NON-INSULATED TYPE-BLADE TERMINALS

- Material: Electrolytic Copper
- Surface : Tin plated
- With or Without Brazed Seam

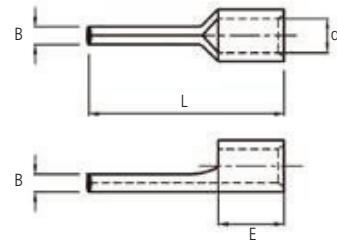


Part Number	Wire Range		Dimension (mm)				
	AWG	mm ²	B	L	E	d	t
KJOBN 152	20~16	1.5	1.8	22.0	5.0	2.0	0.65
KJOBN 153			2.3	15.0	5.0	2.0	
KJOBN 154			2.3	23.5	5.0	2.0	
KJOBN 252	16~14	2.5	1.8	22.0	5.0	2.4	0.65
KJOBN 253			3.2	17.0	5.0	2.4	
KJOBN 254			2.3	23.5	5.0	2.4	
KJOBN 4	14~12	4	4.0	20.0	6.0	3.0	0.75
KJOBN 4-2			2.8	16.5	6.0	3.0	
KJOBN 4-3			3.0	20.5	6.0	3.0	
KJOBN 6	12~10	6	5.0	21.4	7.0	3.6	0.8
KJOBN 10	8	10	5.8	26.5	8.5	5.2	0.9
KJOBN 16	6	16	7.3	32.5	12.5	6.0	1.1
KJOBN 25	4	25	8.0	32.5	12.5	9.0	1.2
KJOBN 35	2	35	8.0	34.5	14.5	10.0	1.4

※When ordering products with a brazed seam 1.5mm²~6mm², add the postfix "B" to the part Number (ex JOB152 → JOB152B)

■ NON-INSULATED PIN TERMINALS

- Material: Electrolytic Copper
- Surface : Tin plated
- With or Without Brazed Seam



Part Number	Wire Range		Dimension (mm)			
	AMG	mm ²	B	L	E	d
KJOPN 15	20~16	1.5	2.0	19.0	5.0	2.0
KJOPN 252	16~14	2.5	2.0	19.0	5.0	2.4
KJOPN 253			2.0	22.0	5.0	
KJOPN 6	12~10	6	2.5	20.0	6.0	3.6

※When ordering products with a brazed seam 1.5mm²~6mm², add the postfix "B" to the part Number (JOPN15 → JOPN15B)

■ NON-INSULATED TERMINALS TYPE-JOF(F)

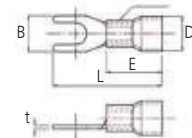
- Material: Electrolytic Copper
- Surface : Tin plated
- Brazed Seam



Catalog Number	Wire Range		Stud size (mm)	Dimension (mm)					Q' ty/ bag
	AWG	mm ²		B	L	E	d	t	
JOF 0513	22~16	1.5	3.2	6.0	14.5	5.0	1.7	0.65	1,000
JOF 0514			4.3	6.8	16				
JOF 0515			5.3	10	17.5				
JOF 15253	16~14	2.5	3.2	6.0	15	5.0	2.3	0.8	1,000
JOF 15254			4.3	6.8	15.5				
JOF 15255			5.3	10	18.5				
JOF 464	14~10	4	4.3	8.0	18.5	6.0	3.6	0.9	1,000
JOF 465		6	5.3	10	19.5				
JOF 105	8	10	5.3	10	23	8.0	4.5	1.0	500
JOF 106			6.5	11	24				

■ INSULATED TERMINALS TYPE-RBV(F)

- Material: Electrolytic Copper
- Surface : Tin plated
- Insulation : PVC

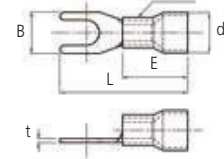


Part Number		Wire Range		Stud size (mm)	Dimension (mm)					Color	Q' ty/ bag
Without Brazed Seam	Brazed Seam	AWG	mm ²		B	L	E	d	t		
JOPF 0513	JOPF 0513W	22~16	1.5	3.2	6.0	20.5	10	5.4	0.65	RED	1,000
JOPF 0514	JOPF 0514W			4.3	6.8	22					
JOPF 0515	JOPF 0515W			5.3	10	23.5					
JOPF 15253	JOPF 15253W	16~14	2.5	3.2	6.0	21	10	6.3	0.8	BLUE	1,000
JOPF 15254	JOPF 15254W			4.3	6.8	21.5					
JOPF 15255	JOPF 15255W			5.3	10	24.5					
JOPF 464	JOPF 464W	14~10	4	4.3	8.0	25.5	14	8.3	0.9	YELLOW	1,000
JOPF 465	JOPF 465W		6	5.3	10	26.5					
JOPF 105	JOPF 105W	8	10	5.3	10	32	15.6	11.0	1.0	RED	500
JOPF 106	JOPF 106W			6.5	11	33					

※when ordering products and postfix "collor & Insulation type" to the partnumber (ex JOPR 1.5-3 Black Straight)

■ INSULATED TERMINALS-FUNNEL ENTRY TYPE-RBP(F)

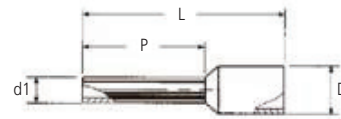
- Material: Electrolytic Copper
- Surface : Tin plated
- Insulation : Nylon
- High Temperature (to 125°C) Applications


















Part Number		Wire Range		Stud size (mm)	Dimension (mm)					Color	Q' ty/ bag
Without Brazed Seam	Brazed Seam	AWG	mm ²		B	L	E	d	t		
JONF 0513	JONF 0513W	22~16	1.5	3.2	6.0	20.5	11	6.1	0.65	RED	1,000
JONF 0514	JONF 0514W			4.3	6.8	22					
JONF 0515	JONF 0515W			5.3	10	23.5					
JONF 15253	JONF 15253W	16~14	2.5	3.2	6.0	21	11	6.3	0.8	BLUE	1,000
JONF 15254	JONF 15254W			4.3	6.8	21.5					
JONF 15255	JONF 15255W			5.3	10	24.5					
JONF 464	JONF 464W	14~10	4	4.3	8.0	25.5	14.5	6.3	0.9	YELLOW	1,000
JONF 465	JONF 465W		6	5.3	10	26.5					
JONF 105	JONF 105W	8	10	5.3	10	32	17	10.8	1.0	RED	500
JONF 106	JONF 106W			6.5	11	33					

INSULATED FERRULES TYPE-SINGLE

- Material: Electrolytic Copper
- Surface : Tin plated
- Insulation : Nylon
- Temperature : -55°C up to +105°C
- Insulation housing conforms to German color code requirements
- DIN or FRENCH color requirements can be ordered.

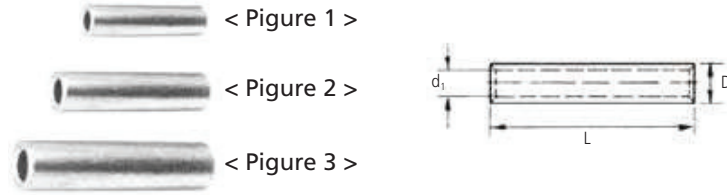


Part Number	Wire Range		Dimension (mm)				Color		Q' ty/ bag
	AWG	mm ²	L	P	d1	D			
CE002506 CE002508	#26	0.25	10.4 12.4	6.0 8.0	1.1	2.5		LIGHT BLUE	1,000
CE005006 CE005008 CE005010	#22	0.50	12.0 14.0 16.0	6.0 8.0 10.0	1.3	3.2		ORANGE	1,000
CE007506 CE007508 CE007510 CE007512	#20	0.75	12.0 14.0 16.0 18.0	6.0 8.0 10.0 12.0	1.5	3.4		WHITE	1,000
CE010006 CE010008 CE010010 CE010012	#18	1.0	12.0 14.0 16.0 18.0	6.0 8.0 10.0 12.0	1.7	3.6		YELLOW	1,000
CE015008 CE015010 CE015012 CE015018	#16	1.5	14.0 16.0 18.0 24.0	8.0 10.0 12.0 18.0	2.0	4.1		RED	1,000
CE025008 CE025010 CE025012 CE025018	#14	2.5	14.0 16.0 18.0 24.0	8.0 10.0 12.0 18.0	2.5	4.8		BLUE	1,000
CE040010 CE040012 CE040018	#12	4.0	17.0 20.0 26.0	10.0 12.0 18.0	3.2	5.4		GRAY	1,000
CE060012 CE060018	#10	6.0	20.0 26.0	12.0 18.0	3.9	6.9		BLACK	1,000
CE100012 CE100018	#8	10	22.0 28.0	12.0 18.0	4.9	8.4		IVORY	1,000
CE160012 CE160018	#6	16	24.0 28.0	12.0 18.0	6.2	9.6		GREEN	1,000
CE250016 CE250018 CE250022 CE250025	#4	25	30 33 36 36	16 18 22 25	7.7	12		BROWN	500
CE350016 CE350025	#2	35	30.0 39.0	16.0 25.0	8.7	13.5		IVORY	100
CE500020 CE500025	1/0	50	36.0 40.0	20.0 25.0	10.7	16.0		OLIVE	100
CE700021	2/0	70	37.0	21.0	14.3	17.6		YELLOW	100
CE950025	3/0	95	44.0	25.0	15.6	19.5		RED	100

※ Crimping Tool : See Chart Page A36~A37, C8~C13

■ TUBULAR BUTT-CONNECTOR TYPE-SP, SB, S-L

- Material : Electrolytic Copper
- Surface : Tin Plated

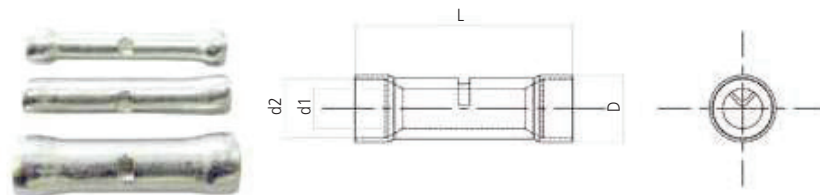


Part Number (Figure 1)	L	Part Number (Figure 2)	L	Part Number (Figure 3)	L	Wire Range		d ₁	D
						AWG	mm ²		
JSP 007	7.5	JSB 007	15	JS 007L	30	20~8	0.75	1.6	2.4
JSP 015	7.5	JSB 015	15	JS 015L	30	18~16	1.5	2.0	3.0
JSP 025	7.5	JSB 025	15	JS 025L	30	16~14	2.5	2.5	3.5
JSP 04	7.5	JSB 04	15	JS 04L	30	14~12	4	3.2	4.5
JSP 06	7.5	JSB 06	15	JS 06L	30	12~10	6	4.0	5.5
JSP 10	10	JSB 10	20	JS 10L	40	8	10	5.0	6.7
JSP 16	12	JSB 16	24	JS 16L	48	6	16	5.4	7.4
JSP 25	14	JSB 25	28	JS 25L	56	4~3	25	6.7	9.0
JSP 35	15	JSB 35	30	JS 35L	60	2	35	8.1	10.6
JSP 50	16	JSB 50	32	JS 50L	64	1~1/0	50	9.5	12
JSP 70	18	JSB 70	36	JS 70L	72	2/0	70	11.3	14.6
JSP 95	19.5	JSB 95	39.5	JS 95L	78	3/0~4/0	95	13.5	17
JSP 120	21	JSB 120	42	JS 120L	82	250Kcmil	120	15.2	19
JSP 150	27	JSB 150	54	JS 150L	108	300Kcmil	150	17	21
JSP 185	32.5	JSB 185	65	JS 185L	130	350Kcmil	185	19	23.5
JSP 240	34	JSB 240	68	JS 240L	136	500Kcmil	240	22	27.4
JSP 300	37	JSB 300	74	JS 300L	148	600Kcmil	300	24	30.5
JSP 400	44	JSB 400	88	JS 400L	176	750Kcmil	400	26	34
JSP 500	49	JSB 500	98	JS 500L	196	1000Kcmil	500	31	40
JSP 630	60	JSB 630	120	JS 630L	240	1250Kcmil	630	34	45



■ NON-INSULATED BUTT SPLICE-METRIC FUNNEL ENTRY TYPE-JSFE

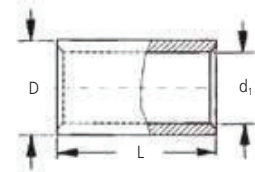
- Material: Electrolytic Copper
- Surface : Tin plated
- Internal wire stop to prevent Over-insertion of Conductor.



Part Number	Wire Range		Dimension (mm)			
	AWG	Stranded (mm ²)	D	d ₁	d ₂	L
JSFE 15	20-16	1.5	4.3	1.8	3.1	22
JSFE 25	16-14	2.5	4.6	2.4	3.6	22
JSFE 6	12-10	4.6	6.4	3.6	5.0	23

CODE CONDUCTOR BUTT-SPLICE, SHORT BARREL TYPE-S

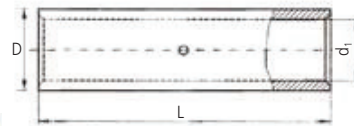
- Material: Electrolytic Copper (TPC)
- Surface : Tin Plated
- Color stripe to Identifi wire range
- To IEC 60228 Class 2 and IEC 60228 Class 5 and 6
- UL Listed 486A-486B up to 35KV



Part Number	Wire Range		Dimension (mm)		
	Code		d ₁	D	L
	AWG	mm ²			
KJS 075	26~20	0.75	1.4	2.3	7.5
KJS 015	20~16	1.5	1.8	3.0	7.5
KJS 025	16-14	2.5	2.3	3.5	7.5
KJS 4	14-12	4	3.0	4.5	7.5
KJS 6	12~10	6	4.0	5.5	7.5
KJS 101	8	10	4.5	6.7	15
KJS 161	6	16	5.4	7.4	17
KJS 25	4-3	25	6.7	9.0	20
KJS 35	2	35	8.1	10.6	23
KJS 50	1	50	9.5	12.0	25
KJS 60	1/0	60	10.2	13.2	25
KJS 70	2/0	70	11.3	14.6	30
KJS 95	3/0	95	13.5	17	33
KJS 100	4/0	100	14	18	33
KJS 120	250Kcmil	120	15.2	19	35
KJS 150	300Kcmil	150	17.0	21	35

CODE CONDUCTOR BUTT-SPLICE, STANDARD BARREL TYPE-SS

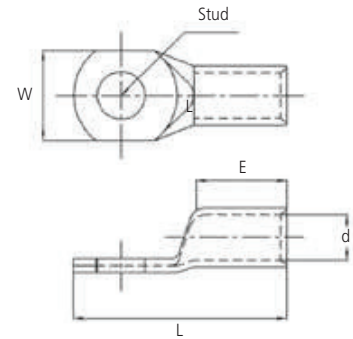
- Material: Electrolytic Copper (TPC)
- Surface : Tin Plated
- Internal Wirestop to Prevend Over Insertion of Cable
- Color Coded to Show Proper Die Number and Color 10mm²~630mm²
- To IEC 60228 Class 2 and IEC 60228 Class 5 and 6
- UL Listed 486A-486B up to 35KV



Part Number	Wire Range		Color Code & Die No	Dimension (mm)		
	Code			d ₁	D	L
	AMG	mm ²				
JSS 075	26~20	0.75	Yellow	1.4	2.3	15
JSS 015	20-16	1.5	Red	1.8	3.0	15
JSS 025	16-14	2.5	Blue	2.3	3.5	15
JSS 4	14-12	4	Brown	3.0	4.5	20
JSS 6	12-10	6	Yellow	4.0	5.5	20
JSS 10	8	10	Red 21	4.5	6.7	30
JSS 16	6	16	Blue 24	5.4	7.4	35
JSS 25	4-3	25	Gray 29	6.7	9.0	40
JSS 35	2	35	Brown 33	8.1	10.6	45
JSS 50	1	50	Green 37	9.5	12.0	50
JSS 60	1/0	60	Pink 42	10.2	13.2	50
JSS 70	2/0	70	Black 45	11.3	14.6	51
JSS 95	3/0	95	Orange 50	13.5	17	54
JSS 100	4/0	100	Orange 50	14	18	54
JSS 120	250Kcmil	120	Purple 54	15.2	19	57
JSS 150	300Kcmil	150	Yellow 62	17	21	57
JSS 185	350Kcmil	185	Red 71	19	23.5	60
JSS 200	400Kcmil	200	Blue 76	21	26	60
JSS 240	500Kcmil	240	Brown 87	22	27.4	73
JSS 300	600Kcmil	300	Green 94	24	30.5	73
JSS 400	800Kcmil	400	Black 106	26	34	86
JSS 500	1000Kcmil	500	White 125	31	40	98
JSS 630	1250Kcmil	630	Pink 142	34	45	108

■ TUBULAR CABLE LUGS, ONE-HOLE, ROUND COMPRESSED TYPE-CE

- Material: Electrolytic Copper (TPC)
- Surface : Tin Plated
- Without Inspection Hole
- To IEC 60228 Class 2



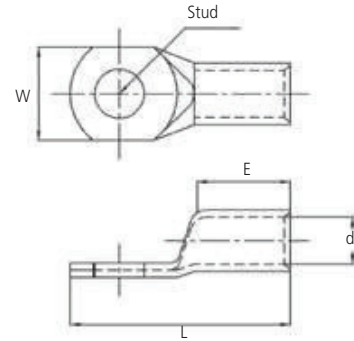
Part Number	Wire Range		Stud Size	Dimension (mm)				Q'ty/ bag
	Code			W	E	L	D	
	AWG	mm ²						
KJOCE 1.5-3	20~16	1.5	M3	6.5	6.0	16	1.8	1,000
KJOCE 1.5-4			M4			17		
KJOCE 2.5-3	16~14	2.5	M3	7.5	6.0	17	2.3	1,000
KJOCE 2.5-4			M4			18		
KJOCE 4-4	14~12	4	M4	8.5	7.0	21	3.0	1,000
KJOCE 4-5			M5			22		
KJOCE 6-4	12~10	6	M4	9.2	7.0	22	4.0	1,000
KJOCE 6-5			M5			22		
KJOCE 10-5	8	10	M5	11.3	11	29	4.7	500
KJOCE 10-6			M6			29		
KJOCE 16-5	6	16	M5	11	10	29	5.4	300
KJOCE 16-6			M6			29		
KJOCE 16-8			M8			33		
KJOCE 25-6	4	25	M6	13	11	32	6.7	300
KJOCE 25-8			M8			32		
KJOCE 35-6	2	35	M6	16	12	37	8.1	200
KJOCE 35-8			M8			37		
KJOCE 35-10			M10			42		
KJOCE 50-6	1	50	M6	18	17	44	9.5	200
KJOCE 50-8			M8			44		
KJOCE 50-10			M10			49		
KJOCE 50-12			M12			53		
KJOCE 70-6	2/0	70	M6	20	21	53	11.3	100
KJOCE 70-8			M8			53		
KJOCE 70-10			M10			53		
KJOCE 70-12			M12			56		

※ Crimping Tool : See Chart Page C2~C18



TUBULAR CABLE LUGS, ONE-HOLE, ROUND COMPRESSED TYPE-CE

- Material: Electrolytic Copper (TPC)
- Surface : Tin Plated
- Without Inspection Hole
- To IEC 60228 Class 2

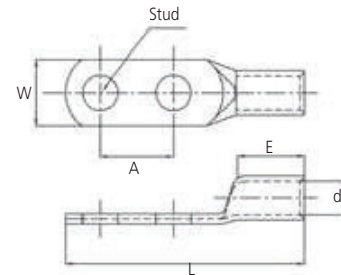


Part Number	Wire Range		Stud Size	Dimension (mm)				Q'ty/ bag
	Code			W	E	L	D	
	AWG	mm ²						
KJOCE 95-6	3/0	95	M6	25	21	57	13.5	50
KJOCE 95-8			M8					
KJOCE 95-10			M10					
KJOCE 95-12			M12					
KJOCE 95-16			M16					
KJOCE 120-8	250Kcmil	120	M8	28	24	64	15.2	50
KJOCE 120-10			M10					
KJOCE 120-12			M12					
KJOCE 120-16			M16					
KJOCE 150-10			M10					
KJOCE 150-12	300Kcmil	150	M12	32	31	76	17	30
KJOCE 150-16			M16					
KJOCE 150-20			M20					
KJOCE 185-12			M12					
KJOCE 185-16	350Kcmil	185	M16	35	34	80	19	30
KJOCE 185-20			M20					
KJOCE 240-12			M12					
KJOCE 240-16	500Kcmil	240	M16	40	36	93	22	25
KJOCE 240-20			M20					
KJOCE 300-12			M12					
KJOCE 300-16	600Kcmil	300	M16	44	43	99	24	20
KJOCE 300-20			M20					
KJOCE 400-12			M12					
KJOCE 400-16	750Kcmil	400	M16	48	46	114	26	10
KJOCE 400-20			M20					
KJOCE 400-24			M24					
KJOCE 500-12			M12					
KJOCE 500-16	1000Kcmil	500	M16	57	52	135	31	10
KJOCE 500-20			M20					
KJOCE 500-24			M24					
KJOCE 630-12			M12					
KJOCE 630-16	1250Kcmil	630	M16	64	61	150	34	5
KJOCE 630-20			M20					
KJOCE 630-24			M24					
KJOCE 800-12			M12					
KJOCE 800-16	1500Kcmil	800	M16	72	78	185	39	5
KJOCE 800-20			M20					
KJOCE 800-24			M24					
KJOCE 1000-16			M16					
KJOCE 1000-20	2000Kcmil	1000	M20	80	78	185	43	5
KJOCE 1000-24			M24					

※Crimping Tool : See Chart Page C2~C18

■ TUBULAR CABLE LUGS, TWO-HOLE, ROUND COMPRESSED TYPE-CE

- Material: Electrolytic Copper (TPC)
- Surface : Tin Plated
- Without Inspection Hole
- To IEC 60228 Class 2



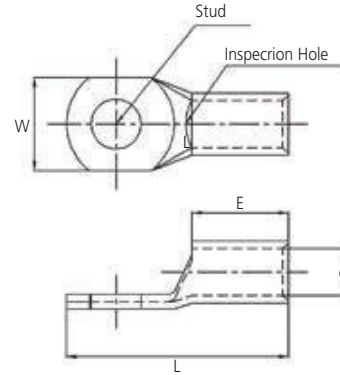
Part Number	Wire Range		Stud Size	Dimension (mm)					Q'ty/ bag
	Code			W	A	d	E	L	
	AWG	mm ²							
KJOCE 6-2	12-10	6	M5	9	22	4.0	12	53.5	1000
KJOCE 10-2	8	10	M6	10	22	4.5	13	58.5	500
KJOCE 16-2	6	16	M6	12	22	5.4	20	67.5	300
KJOCE 25-2	4	25	M8	14	22	6.7	20	71.5	200
KJOCE 35-2	2	35	M8	16	22	8.1	23	75.5	100
KJOCE 50-2	1	50	M10	18	22	9.5	27	85.5	100
KJOCE 70-2	2/0	70	M12	22	45	11.3	28	115	50
KJOCE 95-2	3/0	95	M12	25	45	13.5	35	125	50
KJOCE 120-2	250Kcmil	120	M12	28	45	15.2	40	130	50
KJOCE 150-2	300Kcmil	150	M12	31	45	17	43	134	30
KJOCE 185-2	350Kcmil	185	M12	34	45	19	45	141	25
KJOCE 240-2	500Kcmil	240	M12	40	45	22	53	147	15
KJOCE 300-2	600Kcmil	300	M12	45	45	24	63	162	10
KJOCE 400-2	750Kcmil	400	M14	48	45	26	66	176	8
KJOCE 500-2	1000Kcmil	500	M14	57	45	31	67	188	8
KJOCE 630-2	1250Kcmil	630	M16	64	45	34	70	211	5
KJOCE 800-2	1500Kcmil	800	M16	72	45	39	100	232	5
KJOCE 1000-2	2000Kcmil	1000	M16	80	45	43	102	235	5

※Crimping Tool : See Chart Page C2-C18



TUBULAR CABLE LUGS, ONE-HOLE, ROUND COMPRESSED TYPE-CP

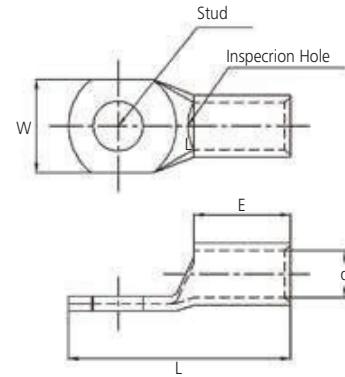
- Material: Electrolytic Copper (TPC)
- Surface : Tin Plated
- With Inspection Hole to visually assure full Conductor insertion.
- Color Coded to Show Proper Die Number and Color
10mm²~70mm²
- To IEC 60228 Class 2
- UL Listed 486A-486B up to 35KV



Part Number	Wire Range		Stud Size	Dimension (mm)				Code Cable Die Color & No.	Q'ty/ bag	
	Code			W	E	L	D			
	AWG	mm ²								
KJOCP 1.5-3	20~16	1.5	M3	6.5	8.0	16	1.8	Red 21	1,000	
KJOCP 1.5-4			M4			17				
KJOCP 2.5-3	16~14	2.5	M3	7.5	8.5	17	2.3	Blue 24	1,000	
KJOCP 2.5-4			M4			18				
KJOCP 4-4	14~12	4	M4	8.5	9.5	21	3.0	Brown 20	1,000	
KJOCP 4-5			M5			22				
KJOCP 6-4	12~10	6	M4	9.5	9.5	22	4.0	Yellow 62	1,000	
KJOCP 6-5			M5							
KJOCP 10-5	8	10	M5	11.5	13	29	4.7	Red 21	500	
KJOCP 10-6			M6							
KJOCP 16-5	6	16	M5	12	13	29	5.4	Blue 24	300	
KJOCP 16-6			M6							
KJOCP 16-8			M8			14				33
KJOCP 25-6	4	25	M6	13	13	32	6.7	Gray 29	300	
KJOCP 25-8			M8							
KJOCP 35-6	2	35	M6	16	16.5	37	8.1	Brown 33	200	
KJOCP 35-8			M8							
KJOCP 35-10			M10			17				42
KJOCP 50-6	1	50	M6	18	23	44	9.5	Green 37	200	
KJOCP 50-8			M8							
KJOCP 50-10			M10							49
KJOCP 50-12			M12			20				53
KJOCP 70-6	2/0	70	M6	21	26	53	11.3	Black 45	100	
KJOCP 70-8			M8							
KJOCP 70-10			M10							
KJOCP 70-12			M12							57

■ TUBULAR CABLE LUGS, ONE-HOLE, ROUND COMPRESSED TYPE-CP

- Material: Electrolytic Copper (TPC)
- Surface : Tin Plated
- With Inspection Hole to visually assure full Conductor insertion.
- Color Coded to Show Proper Die Number and Color
95mm²~1000mm²
- To IEC 60228 Class 2 and Class 5
- UL Listed 486A-486B up to 35KV

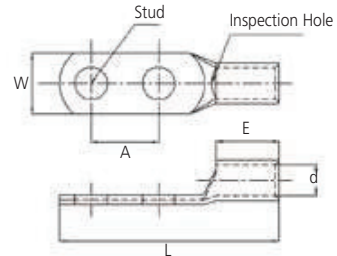


Part Number	Wire Range		Stud Size	Dimension (mm)				Code Cable Die Color & No.	Q'ty/bag
	Code			W	E	L	D		
	AWG	mm ²							
KJOCP 95-6	3/0	95	M6	25	27	58	13.5	Orange 48	50
KJOCP 95-8			M8						
KJOCP 95-10			M10						
KJOCP 95-12			M12						
KJOCP 95-16			M16						
KJOCP 120-8	250Kcmil	120	M8	28	28	63	15.2	Purple 54	50
KJOCP 120-10			M10						
KJOCP 120-12			M12						
KJOCP 120-16			M16						
KJOCP 150-10	300Kcmil	150	M10	30	37	76	17	Yellow 62	30
KJOCP 150-12			M12						
KJOCP 150-16			M16						
KJOCP 150-20			M20						
KJOCP 185-12	350Kcmil	185	M12	35	39	80	19	Red 71	30
KJOCP 185-16			M16						
KJOCP 185-20			M20						
KJOCP 240-12	500Kcmil	240	M12	40	45	93	22	Brown 87	25
KJOCP 240-16			M16						
KJOCP 240-20			M20						
KJOCP 300-12	600Kcmil	300	M12	45	50	100	24	Green 94	20
KJOCP 300-16			M16						
KJOCP 300-20			M20						
KJOCP 400-12	750Kcmil	400	M12	49	53	114	26	Black 106	10
KJOCP 400-16			M16						
KJOCP 400-20			M20						
KJOCP 400-24			M24						
KJOCP 500-12	1000Kcmil	500	M12	57	60	136	31	White 125	10
KJOCP 500-16			M16						
KJOCP 500-20			M20						
KJOCP 500-24			M24						
KJOCP 630-12	1250Kcmil	630	M12	64	68	150	34	Pink 142	5
KJOCP 630-16			M16						
KJOCP 630-20			M20						
KJOCP 630-24			M24						
KJOCP 800-12	1500Kcmil	800	M12	72	84	185	39	Orange 150	5
KJOCP 800-16			M16						
KJOCP 800-20			M20						
KJOCP 800-24			M24						
KJOCP 1000-16	2000Kcmil	1000	M16	80	84	185	43	Green 194	5
KJOCP 1000-20			M20						
KJOCP 1000-24			M24						



TUBULAR CABLE LUGS, TWO-HOLE, ROUND COMPRESSED

- Material : Electrolytic Copper (TPC)
- Surface : Tin Plated
- With Inspection Hole
- Color Coded to Show Proper Die Number and Color
6mm²~1000mm²
- To IEC 60228 Class 2
- UL Listed 486A-486B up to 35KV



Part Number	Wire Range		Stud Size	Dimension (mm)					Code Cable Die Color & No.	Q'ty/bag
	Code			W	A	d	E	L		
	AWG	mm ²								
KJOCP 6-2	12-10	6	M5	9	22	4.0	14	53.5	Brown20	1000
KJOCP 10-2	8	10	M6	10	22	4.5	16	58.5	Red21	500
KJOCP 16-2	6	16	M6	12	22	5.4	23	67.5	Blue24	300
KJOCP 25-2	4	25	M8	14	22	6.7	23	71.5	Gray29	200
KJOCP 35-2	2	35	M8	16	22	8.1	26	75.5	Brown33	100
KJOCP 50-2	1	50	M10	19	22	9.5	31	85.5	Green37	100
KJOCP 70-2	2/0	70	M12	22	45	11.3	32	115	Black45	50
KJOCP 95-2	3/0	95	M12	25	45	13.5	38	125	Orange50	50
KJOCP 120-2	250Kcmil	120	M12	28	45	15.2	41	130	Purple54	50
KJOCP 150-2	300Kcmil	150	M12	32	45	17	45	135	Yellow62	30
KJOCP 185-2	350Kcmil	185	M12	35	45	19	48	142	Red71	25
KJOCP 240-2	500Kcmil	240	M12	41	45	22	56	148	Brown87	15
KJOCP 300-2	600Kcmil	300	M12	45	45	24	65	162	Green94	10
KJOCP 400-2	750Kcmil	400	M14	49	45	26	68	178	Black106	8
KJOCP 500-2	1000Kcmil	500	M14	57	45	31	72	188	White125	8
KJOCP 630-2	1250Kcmil	630	M16	64	45	34	81	212	Pink142	5
KJOCP 800-2	1500Kcmil	800	M16	72	45	39	100	232	Orange150	5
KJOCP 1000-2	2000Kcmil	1000	M16	80	45	43	102	235	Green194	5

■ THERMO COMPRESSION TERMINAL LUG (온도변화용 동관단자)



정상온도

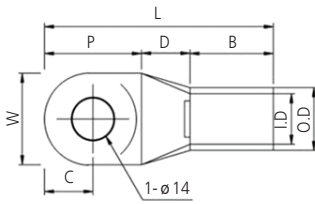


온도상승 후



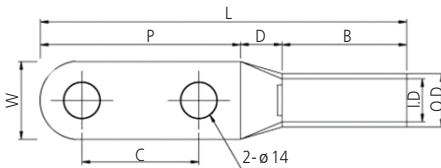
F

< 1HOLE >



SQ	I.D	O.D	L	B	W	P	C	D	T	Hole Size
25sq	6.7	9.0	45	20	13.0	21	10.5	4	2.3	
35sq	8.1	10.6	51	22	15.0	24	11.0	5	2.5	
50sq	9.5	12	52	22	17.0	24	12.0	6	2.5	
70sq	11.4	14.6	55	23	21.0	26	12.5	6	3.2	
95sq	13.5	17	61	25	24.5	28	14.0	8	3.5	
120sq	15.2	19	63	27	28.5	28	14.0	8	3.8	
150sq	17	21	70	30	30.5	28	14.0	10	4.0	
185sq	19	23.5	80	34	34.0	34	17.0	12	4.5	
240sq	22	28	87	40	40.0	35	17.0	12	6.0	
300sq	24	30.5	102	45	44.0	43	17.0	14	6.5	
400sq	26	34	109	50	48.0	45	17.0	14	8.0	
500sq	31	40	114	55	57.0	45	17.0	14	9.0	

< 2HOLE >



SQ	I.D	O.D	L	B	W	P	C	D	T	Hole Size
25sq	6.7	9.0	95	27	13.0	64	45	4	2.3	
35sq	8.1	10.6	99	30	15.0	64	45	5	2.5	
50sq	9.5	12	109	35	17.0	68	45	6	2.5	
70sq	11.4	14.6	119	37	21.0	76	45	6	3.2	
95sq	13.5	17	132	46	24.5	78	45	8	3.5	
120sq	15.2	19	133	47	28.5	78	45	8	3.8	
150sq	17	21	143	55	30.5	78	45	10	4.0	
185sq	19	23.5	147	57	34.0	78	45	12	4.5	
240sq	22	28	150	58	40.0	80	45	12	6.0	
300sq	24	30.5	172	74	44.0	84	45	14	6.5	
400sq	26	34	172	74	48.0	84	45	14	8.0	
500sq	31	40	174	77	57.0	84	45	14	9.0	